

# NAHB The New American Home<sup>®</sup> 2018

*Designed for today with tomorrow's technology*

TNAH<sup>®</sup>  
NAHB The New American Home

Media Partner

**Professional  
Builder<sup>®</sup>**



*Photography by Jeffrey A. Davis Photography, Inc*

## **SPONSORS**

**Platinum**  
Thermador

**Gold**  
Eaton  
Kohler

**Silver**  
84 Lumber  
Corian® Design  
Natural Paving  
Omega Flex  
SharkBite Plumbing Solutions  
Sherwin-Williams

**Bronze**  
AeroBarrier  
Boral Roofing  
Clipay  
Fi-Foil Company  
Fisher & Paykel  
Garaventa Lift  
LiftMaster  
Panasonic Eco Solutions  
North America  
Phantom Screens  
Progress Lighting  
Simpson Door Company  
Synergy Wood Products  
TruStile Doors  
ZIP System® Sheathing and Tape

## **LSC CONTRIBUTORS**

Hearth, Patio & Barbecue  
Association (HPBA)  
Honeywell  
James Hardie Building Products  
Kingspan Insulation  
Mitsubishi Electric  
Cooling & Heating  
Ply Gem - Canyon Stone

## **PARTICIPATING COMPANIES**

4 Seasons / Fireplace & Gas Services  
Artios Fine Custom Cabinetry  
Bassett  
Bathtubs for Pets / Forever Stainless  
Beam Central Vacuum  
Britannia Flooring  
Brown & Brown  
Castle Group Construction  
Closet Factory  
Commercial Flooring Distributors  
Comfort House Equipment Rental  
Crestron  
d3 Creative Studio  
Demilac  
Designer's Choice  
Discover Quartz & Granite  
DixiePly  
Don Bolden Engineering Inc.  
Don King's Concrete, Inc.  
Dynamics Automation  
Element Designs

Elite Kitchen & Bath  
Ellis Surveys, LLC  
Emser Tile  
Emtek  
EWS  
Enovative Group  
Executive Cabinetry  
Ferguson  
First Choice Door & Millwork, Inc.  
Florida Door Solution  
GypTech  
Hafele America Co.  
Hardware Resources  
Heartland Stairways Inc.  
Heritage Block  
Hillsdale  
Holdrite, Inc.  
Hudson Pest Control  
Jolee Collection - Summerset  
Casual  
K&V Fabrication  
KCV Paint  
Kevin Greimel Carpentry  
Legacy Design  
Legacy Electrical  
Legacy Plumbing  
Lioher  
M & S Air Conditioning  
NatureKast Products, Inc.  
Nior  
Noritz  
Panda Windows & Doors

PetersenDean Roofing  
Porters  
QM Drain  
Redguard  
Redmon Design Company  
Reeds Arcade Games\  
SageBrook Home  
ScenaVR  
Schluter  
Schönox, HPS North America Inc.  
SES Polyurethane Systems  
Southern Pool Designs, Inc.  
Southwire  
Stair Lab  
Style Craft  
Summit Automation  
Sun Pan  
Synergy Foam LLC  
Terry's Bobcat Service  
Therma-Flex  
Travis Industries / Maestro Fireplaces / Tempest Torches  
Trusswood  
Ultimate Builder Services  
Universal Furniture  
US Pavers Design, LLC  
Uttermost  
Window and Door Design Center  
Wired Technologies Group  
Wonder Works  
Woodtone  
Woodworx Construction, LLC

# TNAH 2018 BUILD TEAM



**Mike Rowen**  
President,  
Legacy Custom Built Homes

**John Kolb**  
Executive VP,  
Legacy Custom Built Homes

**Kate Clarke**  
Interior Designer / Legacy Design



**Tom Swartz**  
TNAH 2018 Chairman



**Ted Mahoney III**  
TNAH 2018 Vice Chairman



**Tucker Bernard**  
Executive Director,  
NAHB-LSC/TNAH/TNAR



**Glen Redmon**  
Manager,  
NAHB-LSC/ IBS Show Homes



**Tony Mancini**  
Group Director  
Principal, SGC Horizon, LLC



**Judy Brociek**  
Director of Events,  
SGC Horizon, LLC



**Denise Dersin**  
Editorial Director,  
Professional Builder



**Drew Smith**  
Two Trails Inc.  
Performance Verifier/  
Green Building Consultant



# TABLE OF CONTENTS

- 4** About TNAH 2018
- 6** Modern Kitchen
- 8** The Master Suite
- 10** Interior Design
- 12** Details, Details
- 14** Windows & Stone
- 15** Architectural Design
- 16** Performance
- 18** Technology
- 19** Fun Facts
- 20** Thank You to Our Sponsors

# ABOUT TNAH 2018

The New American Home® 2018 (TNAH) is the 35th edition in a series of cutting-edge exhibition homes sponsored by the National Association of Home Builders. Located within the Bella Collina golf community in Montverde, Florida, the 6,676-square-foot home serves as an official show home of the 2018 International Builders' Show®.

Presented by the NAHB Leading Suppliers Council and Professional Builder magazine, TNAH redefines modern living by featuring only the latest in building

trends, products and techniques. Its overall design harkens to Tuscan architecture that is combined with contemporary amenities.

In keeping with the mission of The New American Home program, the design-build team from Legacy Custom Built Homes showcases within TNAH several innovative building concepts. These advancements and best practices in energy efficiency, indoor-air quality and universal design can be incorporated into any new home to enhance aesthetics and optimize performance.







# MODERN KITCHEN





The kitchen combines superior style with exceptional efficiency. Ample storage is made available in the white shaker cabinets from Executive Cabinetry, which are complimented by the latest Thermador appliances to create a streamlined design. Corian counter tops, and a unique glass panel above the island casts a subtle glow that adds warmth and charm.



# MASTER SUITE





Designed to pamper the home owners, the master suite is a secluded retreat that is as functional as it is stylish. The master bathroom's spa-like feel is enhanced by its free-standing tub, resting upon mosaic by Emser Tile, which together create a dramatic visual impact. Designated his-and-her closets, vanities and toilets offer an abundance of privacy and convenience. Even the shower heads feature the latest technology from Kohler with his-and-her control settings. Hanging pendants from Progress Lighting in each vanity and within the bedroom align with the newest trend in lighting.





# INTERIOR DESIGN

A transitional blend of furnishings with modern, clean lines is seen throughout the home. Each room has its own identity, yet the overall flow moves seamlessly between spaces. Hues of mixed golds and silvers instill warmth, while a cobalt blue coupled with crisp grays and creams add a clean contrast.

Lighting solutions provided by Progress Lighting were implemented throughout the home, which features LED backlighting that enhances focal points and adds an element of mood lighting. Stone-enclosed fireplaces and wood-accented bedroom walls exemplify a fresh, linear style.



# DETAILS, DETAILS



# WINDOWS & STONE

## WINDOWS

Panda Windows & Doors provided a customized package of windows for The New American Home 2018 to maximize the property's awe-inspiring, lakefront views. The home features doors from Panda's innovative Lift & Slide product line, incorporating cutting-edge technology and high-quality construction, which enables them to open and close with just one finger.



## STONE

The interior of the home flows effortlessly into a gracious amount of outdoor living space featuring several cascading patio levels of stone pavers from Natural Paving. The interior fireplaces and exterior brick facades feature Canyon Stone. For the home's retaining walls, Legacy used an innovative wall block system from Heritage Block with a simple installation and the look of natural dry-stack stone.





# ... ARCHITECTURAL DESIGN

A skillful blend of traditional and contemporary architecture results in a distinctive, modern-Tuscan design that is both inviting and sophisticated. A vented tile roofing system by Boral helps shield the home from the elements while providing additional energy efficiency.



# PERFORMANCE

## Energy Efficiency and Innovation

TNAH 2018 demonstrates a wide variety of cutting-edge designs and state-of-the-art products from manufacturers all over the world. Throughout the project, Two Trails, Inc. worked closely with NAHB's Leading Suppliers Council and TNAH's build team to achieve the highest possible efficiency. The home is expected to be 35.84% more efficient than the average new home, resulting in more than \$1,300 in annual energy savings to the home owner. Some of the key features include:

## Thermal Shell

- Unvented and air-sealed attic with an SES SucraSeal open-cell spray foam system (average insulation value of R-21)
- Panda windows and patio doors with low-e coating and argon gas fill to limit solar heat gain and optimize air tightness
- AeroBarrier sealing system that simultaneously measures and seals the building envelope to prevent air leaks
- Openings and penetrations seals are designed to achieve 3.5 natural air changes under blower door testing at 50 Pa
- Core-Fill 500, Kingspan Greenguard, and Fi-Foil M-Shield wall insulation system on exterior masonry walls (insulation value of R-16.2)
- ENERGY STAR®-qualified roof



## HVAC

- Ducted mini split space conditioning is provided by Mitsubishi
- Variable speed compressors from Mitsubishi in outdoor heat pump units adds efficiency and quietness
- Mechanical ventilation provided by Panasonic
- Space-conditioning systems located entirely within the conditioned space

## Water

- Natural Gas tankless water heaters (EF = 0.95) provides the hot water
- Kohler low-flow, EPA-certified 1.5 GPM lavatory faucets and 1.28 GPF toilets provides the indoor water use reduction
- High-efficient micro spray, drip-lines and irrigation controller to reduce water waste

## Electrical

- LED lighting used for all interior and exterior lamps
- ENERGY STAR®-rated appliances, including dishwasher, refrigerator, freezer, and clothes washers

## Indoor Air Quality

- Sherwin Williams low-VOC paints, finishes, adhesives and sealants
- MERV 13 space-conditioning air filters
- HVAC ducts sealed during construction to prevent pollutants from entering the system
- Whole-building ventilation system configured to optimize the amount of fresh air in the home



# TECHNOLOGY

Full-home automation is made possible in TNAH 2018 with a state-of-the-art technology package provided by Crestron. Through an integrated control hub, the owner can easily and securely control the home's entertainment and speaker systems, as well as the lights, window shades, thermostats, security system, door locks and more. TNAH 2018 features:

**Premium Audio.** The fully scalable audio distribution system delivers high-output audiophile sound quality to every room in the home with reduced cabling, low power consumption, advanced DSP and integrator-friendly setup.

**Innovative Lighting Solutions.** The centralized and customizable lighting system enables complete control of the lights, shades, occupancy sensors, daylight sensors and other equipment throughout the home.

**High-Performance Networking.** The control processor featured in TNAH 2018 is an enterprise-class control system that provides more power, increased memory and high-speed communication between all devices throughout the home.

**User-Friendly Controls.** Nearly every gadget in the home can be controlled through a user interface featuring voice recognition, web browsing, H.264 streaming video, a built-in camera and an advanced media player.





# FUN FACTS

## WINDOWS

<i>Type</i>	<i>Supplier</i>	<i>Qty.</i>
Window Fixed	Panda Windows & Doors	44

---

## FLOORING

<i>Type</i>	<i>Supplier</i>	<i>Sq./Ft.</i>
Decorative Tile	Emser Tile	9,650
Terrace Pedestal Pavers	Natural Paving	10,899
Hardwood Flooring	Britannia Flooring	1,881

---

## LIGHTING

<i>Type</i>	<i>Supplier</i>	<i>Qty.</i>
Decorative Light Fixtures	Progress Lighting	119
Recessed Cans	Eaton (+ 20 by Lotus LED)	190
Landscape Lighting	Progress Lighting	57
Tape/Under Cabinet	Impact Lighting	1500

---

## DOORS

<i>Type</i>	<i>Supplier</i>	<i>Qty.</i>
Garage Door	Clopay	3
Interior Swing Doors	TruStile	17
Barn Door	TruStile	18
Exterior Sliding Glass Doors	Panda Windows & Doors	9
Exterior Swing Doors	Panda Windows & Doors	7
Exterior Main Entry Doors	Simpson Door Company	2
Elevator Door	Garaventa Lift	2

---

# PROFESSIONAL BUILDER WOULD LIKE TO THANK ITS SPONSORS



**TNAH**<sup>®</sup>  
NAHB The New American  
Home

Media Partner  
**Professional  
Builder**<sup>®</sup>

# PROFESSIONAL BUILDER WOULD LIKE TO THANK ITS SPONSORS

## PLATINUM SPONSOR



## GOLD SPONSORS



## SILVER SPONSORS



## BRONZE SPONSORS



The following pages showcase our sponsors' products

# INTERIOR

## Professional Builder®



### THERMADOR

Star Sapphire Dish - DWHD860RPR

Introducing a rare, unequaled gem in the kitchen: the fastest dishwasher with a 20-minute hot water wash cycle in the industry. Never again will you need to interrupt a dinner party to refresh wine glasses and place settings.



### KOHLER

Karbon® Articulating two-hole deck-mount kitchen 6227-C11-VS

The Karbon kitchen sink faucet's silver tube design features three articulating pivot points for total range of motion: extend the faucet fully to fill large pots, lower it into the sink for food preparation and cleanup, or fold it out of the way when not in use.



36" Freedom Fresh Food Column - T36IR900SP

Preserve every incredible moment in your culinary adventures with the New Freedom® Refrigeration Collection. Taking personalization to a new level, the Fresh Food, Freezer, and Wine line features custom exterior and interior renovations.



### CORIAN®

Zodiaq® Quartz - Venetia Cream

With innovative designs and an enduring color palette, Zodiaq® Quartz will make all your design aspirations come true. Among its many benefits, Zodiaq® Quartz is durable, non-porous and stain-resistant and can transform a space into an environment that is truly unique.



Built-in Coffee Machine - TCM24RS

This programmable coffeehouse-style machine is like having your own personal barista in your home. Indulge yourself with up to 10 different customizable beverages, and store your favorite drinks for family and guests.



Corian® Solid Surface - Gray Onyx

With innovative designs and an enduring color palette, Corian® Solid Surface will make all your design aspirations come true. Achieve your design dreams while still selecting a quality product that will stand up to whatever life may throw at it. Among its many benefits, Corian® Solid Surface is durable, non-porous and seamless.



# INTERIOR



### PROGRESS LIGHTING

Aspen Creek  
P400027-009

Fixtures within the Aspen Creek collection offer a handsome look for a modern farmhouse or rustic living spaces. Featuring a steel design frame painted to emulate driftwood with Brushed Nickel accents add a modern element. Etched natural parchment glass shades complete the look for this four-light chandelier.



The Pointe  
P2098-15

With alternating clear and champagne tinted K9 glass accents, The Pointe celebrates the element of sparkle through a sophisticated and glamorous design.



### SHERWIN-WILLIAMS - Interior walls

Cashmere® Interior Latex Paint

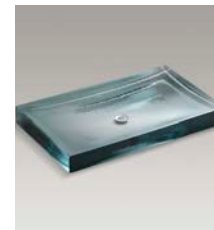
Cashmere® Interior Latex glides on smooth and delivers a rich, silky finish that looks good from all angles. Ideal for residential spaces, Cashmere comes in flat enamel, low lustre, pearl finish or medium lustre and a range of colors.



### KOHLER

DTV+™ digital interface - 99693-NA

DTV+ is KOHLER's most advanced showering system, bringing together four elements - water, steam, lighting, and music—to give you a true multi-sensory showering experience. Every element of your experience is completely customizable to your needs and is controlled by this simple touch-screen interface.



Antilia® Wading Pool® glass bathroom sink - 2369-B11

Crafted of cast glass, the Antilia Wading Pool basin makes a distinctive statement of quiet luxury, in an expansive design that becomes a centerpiece in your bath. The subtle rippled texture of the glass conveys the substantial force of nature and its shifting fluidity, and the durable surface is remarkably easy to clean.



### TRUSTILE DOORS, LLC.

TM Series

Since 1995, TruStile has been a leader in design. We believe that well-designed interior doors can have a large impact on today's home. That is why we have innovated over 400 styles across all architectural categories to create the industry's broadest made-to-order product line.

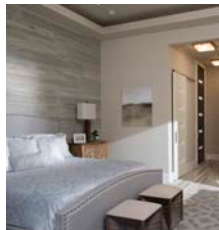
# INTERIOR



## SYNERGY WOOD

Wood: Cypress, Color: Ebony

Synergy Cypress is a durable 100% wood product perfect for covered exterior spaces, due to its natural resistance to rot, decay and other damaging elements. All planks are stained and hand-wiped at our facility eliminating field craftsmanship or guesswork.



Rustic Barnwood - Tavern

Rustic Barnwood replicates an authentic appearance of reclaimed wood without the hassle of sourcing lumber from dismantled structures, or the chemicals, pathogens and insects that come with it. All planks are 100% Cypress, tongue and groove and end-matched which reduces time to install and overall waste. Rustic Barnwood offers 5 unique colors in 5 different widths of varying thickness.



## PANASONIC

WhisperRecessed LED - FV-08VRE2

WhisperRecessed LED incorporates a powerful, yet quiet 80 CFM fan behind an elegant recessed LED light. Includes a dimmable 11W, ENERGY STAR® 2.0 certified GU24 base LED lamp, beautiful lighting with 6-1/2" aperture and advanced luminaire design. Can be used to comply with the latest codes and standards



WhisperGreen Select Multi-speed - FV-05-11VKS1

WhisperGreen Select Multi-Speed with Time Delay allows you to select the proper CFM settings to satisfy ASHRAE 62.2 continuous ventilation requirements. The fan runs continuously at a preset lower level, then elevates to a maximum level of operation when the wall switch is turned on, or when the Motion Sensor or Condensation Sensor module is activated.



## EATON

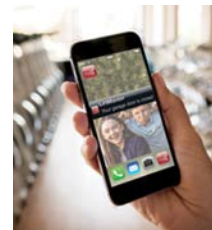
USB Charging Solutions  
Combination Nightlight Switches, Receptacles and GFCIs  
Occupancy and Vacancy Dimmers and Sensors  
Self-test GFCI Devices with Audible Alarm  
Arc Fault Ground Fault Surge Protection Devices



## EATON

Power distribution and surge protection  
CHSPT2ULTRA/CH250SUR/CH60NLPN225N/CH42L225G/  
CH12L125R/DPB222R

Eaton's residential power distribution equipment and surge protection, provide reliable and safe electrical power throughout the home.



## LIFTMASTER

LiftMaster® DC Battery Backup Wall Mount Wi-Fi®  
Garage Door Opener, 8500W

Our most advanced wall-mount opener lets you build more space into the garage. With all the best-in-class features packed in, like built-in Wi-Fi® connectivity and the Automatic Garage Door Lock, the 8500W is the ultimate access solution.



## GARAVENTA LIFT

Home Elevators, Elvora In-line Drive

NEW! Side sliding doors for home elevators by Garaventa Lift. No more disabled elevator because someone left a door or gate open upstairs! ALWAYS code-compliant, Garaventa home elevators with sliding doors are compliant to the new, stricter elevator safety code ASME A17.1-2016 being adopted this year in most jurisdictions.

# EXTERIOR



### CLOPAY

Clopay® Canyon Ridge® Collection Modern Series

Clopay Canyon Ridge Modern Series faux wood garage doors are constructed in a durable, low-maintenance composite material that won't rot, warp, or crack. An energy-efficient, polyurethane foam insulated core provides R-values up to 20.4. Six designs with optional windows and decorative metal inlays are offered in Clear Cypress and Mahogany woodgrain cladding.



### NATURAL PAVING USA

De Terra - Promenade stone pavers

Natural Paving USA's calibrated De Terra stone pavers present builders and home owners with the ultimate in durability and beauty with: gauged thicknesses (available in a 1 1/4" and 2" thick option), astm tested and easy and fast laying. Such credentials make natural stone the natural choice over concrete paving alternatives.



### NATURAL PAVING USA

Vitripiazza- Tempesta flagstones

Vitripiazza is an exclusive, highly durable Italian vitrified porcelain paving. Vitripiazza flagstones offer a varied color blend reflecting natural stone, are easy to clean and provide homeowners the ultimate option in longevity and style. The Vitripiazza range also has matching internal tiles to enable continuity of design for inside-outside projects.



### SHERWIN-WILLIAMS

Emerald® Exterior Acrylic Latex Paint - K47W00051

Emerald® Exterior Acrylic Latex Paint features best-in-class performance. With its exclusive cross-linking 100% acrylic technology, Emerald resists blistering, peeling, fading and dirt pickup, and offers exceptional durability and hide. For long-lasting curb appeal, Emerald is the ideal choice.



### PHANTOM SCREENS

Motorized Retractable Screens

North America's leading provider of retractable screens, Phantom Screens® offers insect protection, solar shading, temperature control and enhanced privacy for doorways, windows, and large openings such as patios, verandas, and lanais.



### SIMPSON DOOR COMPANY

Contemporary Exterior Doors - Door design 7409

Enjoy clean lines, uncluttered looks and distinctive styles, all with the quality and craftsmanship you expect from Simpson. Embrace the bold architectural features of modernism without sacrificing the warmth and durability of wood. Simpson can make any door to fit your style of home.

# BEHIND THE WALLS



## AEROBARRIER

Building Envelope

AeroBarrier can be used in single and multi-family projects that need to meet the stringent performance requirements of LEED, ZERH, Passive House, or a states IECC. No matter what the leakage requirement, AeroBarrier can guarantee any level of envelope tightness.



## FI-FOIL M-SHIELD

F-MShield16500P

Fi-Foil M-Shield is a high-performance reflective insulation solution for mold & mildew sensitive projects. An industry leading paperless masonry wall insulation, M-Shield contains no cellulose thereby eliminating the food source for mold growth. A green factor for wall systems, M-Shield improves air quality and the low-e surfaces enhance air space for greater energy efficiency.



## BORAL ROOFING

Boral Cool Roof System

Homeowners could save an average of \$15 to \$20 per month immediately compared to a standard asphalt shingle roof and as energy rates rise year over year, your savings could increase as well and could amount up to \$20,000 over 30 years. Try our energy calculator on [BoralRoof.com](http://BoralRoof.com)



## SHARKBITE PLUMBING SOLUTIONS

SharkBite plumbing fittings are designed to optimize efficiency and performance compared to tool based pipe-joining methods. They are ideal for working in tight spaces on remodel or repipe jobs, can be installed in wet or dry lines and have the versatility to connect almost any type of pipe.



## 84 LUMBER COMPANY

Lumber

84 Lumber Company is the nation's leading privately held supplier of building materials, building supplies, manufactured components and industry-leading services for single- and multi-family residences and commercial buildings.



## OMEGA FLEX INC.

CounterStrike CSST, FGP-CS-size

There are no additional bonding requirements for CounterStrike® CSST imposed by the manufacture's installation instructions. Lays straighter and pulls easier, dramatically decreasing installation times. Unlike competitive brands, CounterStrike® is non-annealed making it more crush resistant, and easier to cut.



## ZIP SYSTEM - Wall and Roof Framing

ZIP System® sheathing and tape

ZIP System® sheathing and tape has revolutionized roof and wall installation with a built-in water-resistive barrier. Simply hang panels and tape seams for a tight, water-resistant enclosure. Hear why builders are switching to ZIP System sheathing and tape at [ZIPRevolution.com](http://ZIPRevolution.com).



## ADVANTECH - Subfloor Assembly

AdvanTech® subflooring

With twenty years of proven performance, quality comes standard with AdvanTech® subflooring. Advanced stiffness, moisture resistance, and a polyurethane bond, make subfloor assemblies with AdvanTech® subflooring and subfloor adhesive so strong they're backed by a Squeak-Free Guarantee. Visit [AdvanTechQuiet.com](http://AdvanTechQuiet.com) and [SqueakFreeGuarantee.com](http://SqueakFreeGuarantee.com).

## PLATINUM PARTNER



**Thermador** 

Since 1916, Thermador kitchen appliances have been synonymous with exceptional. Pushing boundaries is part of our very nature: we introduced America to the cooktop, rolled out steam and convection ovens, and opened the door to personalization with column refrigeration. Our passion for everything culinary is what inspires us, ignites the flame of imagination, and transcends the ordinary—so you're empowered to create unforgettable experiences in the kitchen and beyond.

[www.thermador.com](http://www.thermador.com)

 **NAHB**  
National Association  
of Home Builders

Leading  
Suppliers Council

**GOLD PARTNERS**



*Powering Business Worldwide*

2018 The New American and Remodel Homes will employ many technologies provided Eaton. In addition to Eaton's load centers and switches, the home will feature Eaton circuit breakers, USB receptacles, energy saving lighting controls, home automation devices and a full line of circuit protection devices such as AF/GF that will deliver power safely to the home.

Eaton provides backup power solutions for everything from emergency circuits in small homes to complete power for all functions in a small office building. Eaton's complete line of standby/portable generators and automatic/manual transfer switches provide reliable backup power for home, camping, tailgating, construction and outdoor events.

[eaton.com/residential](http://eaton.com/residential)



THE BOLD LOOK  
OF **KOHLER**®

With a solid business reputation and a commitment to design excellence, you're just the kind of builder we have in mind when we design KOHLER products. When you choose KOHLER for your homes, you make a bold statement about the craftsmanship, innovation and uncompromising water-saving options your customers can expect.

[us.kohler.com](http://us.kohler.com)



## SILVER PARTNERS



84 Lumber Company is the nation's leading privately held supplier of building materials, building supplies, manufactured components and industry-leading services for single- and multi-family residences and commercial buildings.

[84lumber.com](http://84lumber.com)



With innovative designs and an enduring color palette, Corian® quartz will make all your design aspirations come true. Achieve your dreams while still selecting a quality product that will stand up to whatever life may throw at it. Among its many benefits, Corian® Quartz is durable, non-porous and stain-resistant.

[corianquartz.com](http://corianquartz.com)



### Natures alternative to concrete:

Natural Paving USA provides inspirational natural stone hardscape products that are cut, calibrated and ASTM tested. Our extensive range and inventory is ready to ship!

[naturalpavingusa.com](http://naturalpavingusa.com)

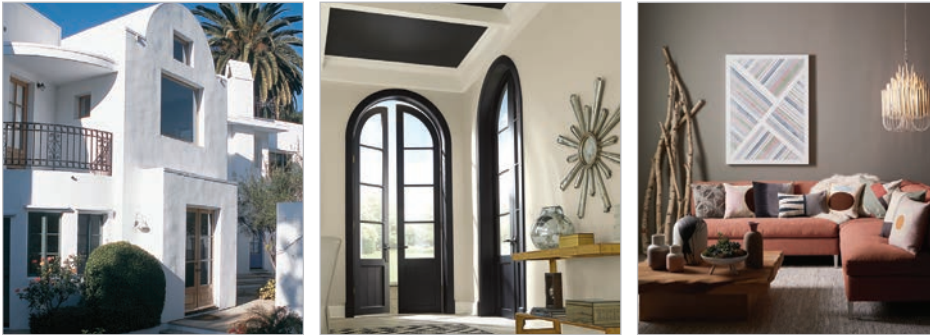


The SharkBite EvoPEX plumbing system is a total end-to-end solution from meter to fixture, engineered to optimize efficiency and minimize potential install errors over alternative to tool based pipe-joining methods.

[sharkbite.com](http://sharkbite.com)



## SILVER PARTNERS



Sherwin-Williams is the leader in innovative coating solutions and expert service for the builder market. Since 1866, professionals and homeowners have relied on the quality, durability and beauty our products deliver.

[s-wbuilders.com](http://s-wbuilders.com)



**TracPipe CounterStrike**  
Flexible Gas Piping by OmegaFlex.

CounterStrike® CSST introduced to the market in 2004 is used for natural gas and propane installations. Over 150 million feet of CounterStrike® has been installed in residential as well as commercial and industrial buildings

[tracpipe.com](http://tracpipe.com)



## BRONZE PARTNERS



An innovator in engineered wood materials and flashing solutions, Huber Engineered Woods helps solve construction challenges for today's builders and homeowners. ZIP System® sheathing and tape has revolutionized building enclosures and AdvanTech subflooring products are the FLAT OUT BEST™ start to a quiet floor.

[huberwood.com](http://huberwood.com)



Breakthrough Envelope Sealing Technology

AeroBarrier is a breakthrough building envelope sealing technology that takes the guesswork out of sealing the building envelope. No matter what the leakage requirement, AeroBarrier can guarantee it!

[aerobarrier.net](http://aerobarrier.net)



Boral is the nation's largest manufacturer of sustainable, durable and affordable roof tile. Boral has cool roof colors available across multiple profiles to complement a spectrum of architectural styles.

[BoralRoof.com](http://BoralRoof.com)





## BRONZE PARTNERS



America's Favorite Garage Doors®

Faux wood garage doors with Mid-Century modern appeal available in six customizable designs from Clopay, North America's leading residential garage door manufacturer.

[clopaydoor.com](http://clopaydoor.com)



With a commitment to sustainability and advancement of green building technologies, Fi-Foil Company offers a full line of innovative, high performance radiant insulation products and systems.

[Fifoil.com/hyfi](http://Fifoil.com/hyfi)



Unsurpassed reliability. That's why 2018 marks the 6th straight year that Designers of The New American Home have selected a residential elevator by Garaventa Lift for this prestigious showcase project.

[garaventalift.com](http://garaventalift.com)



# LiftMaster®

Loaded with innovative features, LiftMaster® Wi-Fi® Garage Door openers make it easy to connect customer to the latest technology to help them manage their busy lives.

[liftmaster.com](http://liftmaster.com)



# Panasonic®

Panasonic is proud to be recognized for the 8th consecutive year, earning ENERGY STAR's Sustained Excellence 2017 Award. We continue to demonstrate our innovation leadership year after year by offering whisper quiet fans, DC Motor technology, and leading-edge LED Lighting.

[us.panasonic.com/ventfans](http://us.panasonic.com/ventfans)



# PHANTOM® SCREENS

Phantom Screens® offers insect protection, solar shading, temperature control and enhanced privacy for doorways, windows, and large openings. Phantom retractable screens are designed to pull into place when required and retract out-of-sight when not in use.

[phantomscreens.com](http://phantomscreens.com)



**BRONZE PARTNERS**



**PROGRESS LIGHTING**<sup>TM</sup>

Affordable luxury lighting solutions by Progress Lighting. Images courtesy of Toll Brothers, design by Possibilities for Design.

[progresslighting.com](http://progresslighting.com)



**Simpson**<sup>®</sup>  
Door Company

With thousands of standard choices and infinite ways to personalize, Simpson has the perfect door to represent your creativity and style. Get any design, in any wood and in any shape and size.

[simpsondoor.com](http://simpsondoor.com)



**SYNERGY WOOD**

As the leading expert in prefinished wood for ceilings and walls, Synergy Wood delivers durable and premium solutions to interior and exterior design applications. Our products are 100% American made - a perfect fit for The New American Home.

[synergywood.com](http://synergywood.com)



**TRUSTILE**<sup>®</sup>  
DRIVEN BY DESIGN<sup>®</sup>

Only TruStile can deliver the design, flexibility and quality that a custom home demands. We offer over 400 styles, from traditional to modern, made to order from premium materials.

[trustile.com](http://trustile.com)



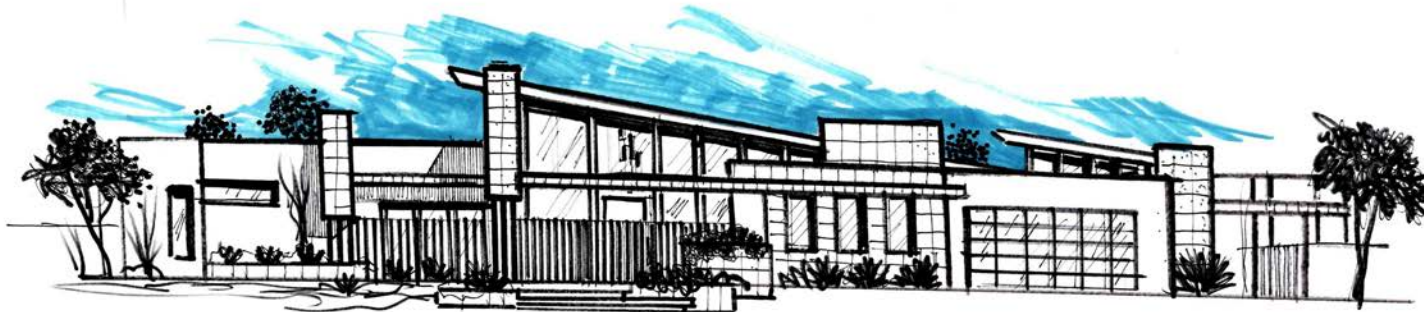
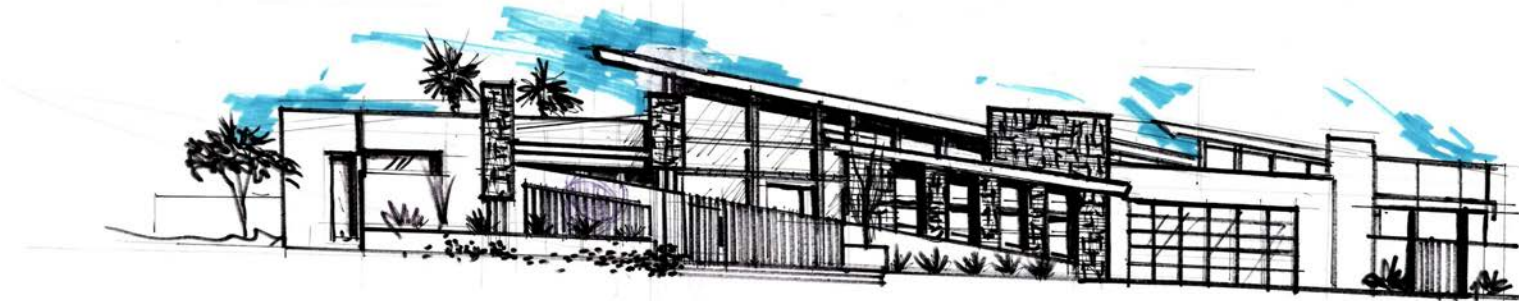
*Professional Builder* is the proud media sponsor of The New American Home

To see the virtual tour and our sponsors' product brochures visit: [www.tnah.com](http://www.tnah.com)

Download *Professional Builder* magazine to read more about The New American Home in the January, February and March issues.

# 2019 THE NEW AMERICAN HOME®

COMING SOON!





Media Partner

**Professional  
Builder**

[tnah.com](http://tnah.com)